

# REYNOLDS®

## **RoughOUT** SCRAPERS

with a permanently protruding center blade

<i>model</i>	<i>heaped capacities</i>
--------------	--------------------------

<b>16CS10</b>	<b>16.0 yd<sup>3</sup></b> (12,m <sup>3</sup> )
---------------	--

<b>17CS12</b>	<b>17.0 yd<sup>3</sup></b> (12,m <sup>3</sup> )
---------------	--

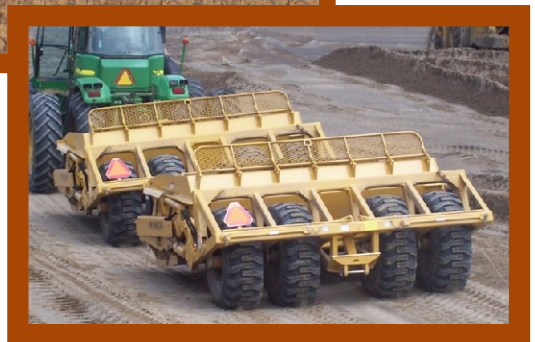


**model 16CS10**

- These PivotDUMP models are self-loading to excavate, but not finish the surface.

- Tandem hydraulics and rear hitch.

- Three reversible blades, protruding center section with serrated edge on one side. Cut, pictured at right.



*“America’s Preferred Scraper”*

# REYNOLDS®

**REYNOLDS INTERNATIONAL EQUIPMENT, L.P.**

**P.O. Box 550, McAllen, Texas 78505-0550 USA**

[www.reynoldsinternational.com](http://www.reynoldsinternational.com)



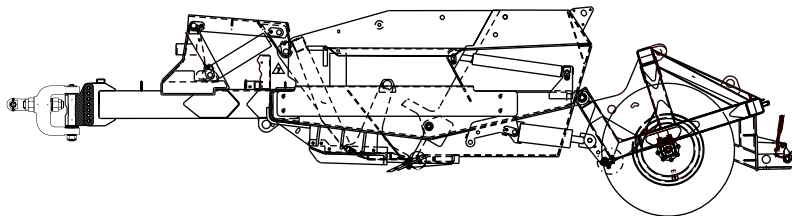
# RoughOUT SCRAPERS

with a permanently protruding center blade

Specifications model number	capacity		width		tires	shipping weight	Price Quote
	heaped	struck	cutting	transport	four		
<b>16CS10</b>	16.0 yd <sup>3</sup> (12,2 m <sup>3</sup> )	12.0 yd <sup>3</sup> (9,1 m <sup>3</sup> )	120" (3,05 m)	137" (3,48 m)	20.5 x 25	17,400 lb (7909 Kg)	
<b>17CS12</b>	17.0 yd <sup>3</sup> (13,0 m <sup>3</sup> )	13.0 yd <sup>3</sup> (10,0 m <sup>3</sup> )	144" (3,65 m)	163" (4,14 m)	20.5 x 25	17,900 lb (8136 Kg)	

## Standard Features

Three piece cutting blade with permanently protruding center section. (will not cut flat). Height adjustable yoke hitch. Hydraulic cylinder blocks for safe servicing and transport.



Specifications subject to change without notice.

## Options

GPS-Laser receiver bracket.  
Drawbars for most tractors.

## Tractor requirements

■ **Hydraulics** 25 GPM (100 l/min) at 2500 PSI (175 bar) optimum

■ **engine HP range**

model	single
16CS10	300-350
17CS12	350-400



**REYNOLDS INTERNATIONAL EQUIPMENT, L.P. P.O. Box 550, McAllen, Texas 78505-0550 USA**  
**Tel. (956) 687-7500 Fax (956) 687-3082, E mail: [info@reynoldsinternational.com](mailto:info@reynoldsinternational.com)**